

## 2-6 Special Functions

Step function

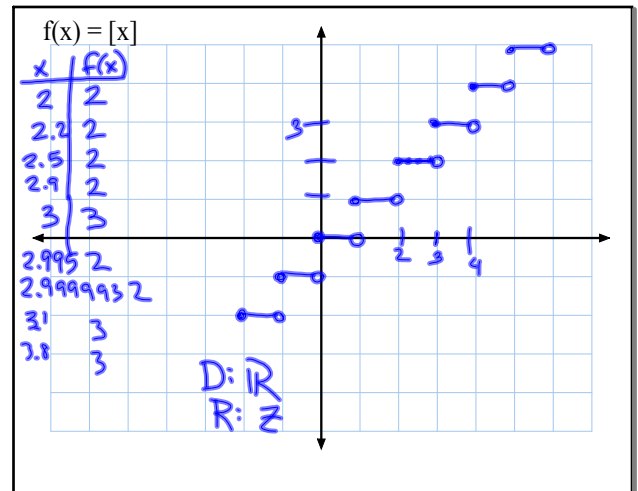
$$f(x) = [x]$$

The greatest integer function--the greatest integer less than or equal to  $x$ .

$$f(5.4) = [5.4] = 5$$

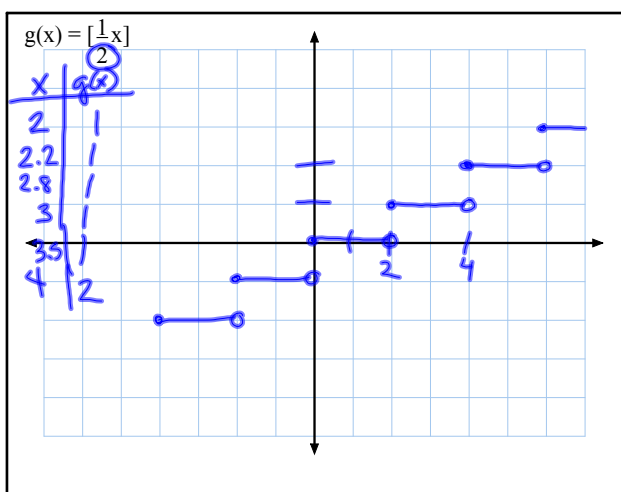
$$f(5.8) = [5.8] = 5$$

$$f(-2.3) = [-2.3] = -3$$

 $[x]$  ← in textbook

Oct 9-10:43 AM

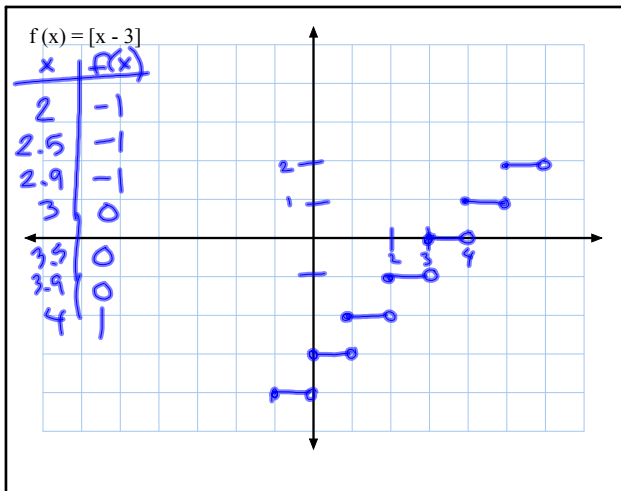
Oct 9-10:48 AM



Oct 9-10:48 AM

$\left[\frac{1}{2}x\right]$  (2 units long)  
 Multiplying on inside  
 affects the length of  
 the step

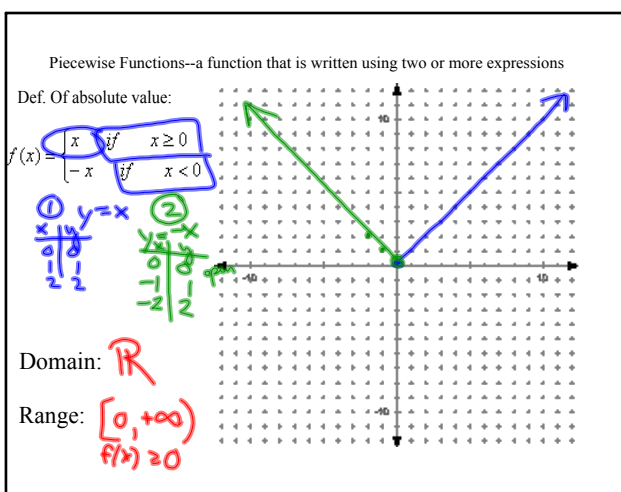
Oct 4-12:04 PM



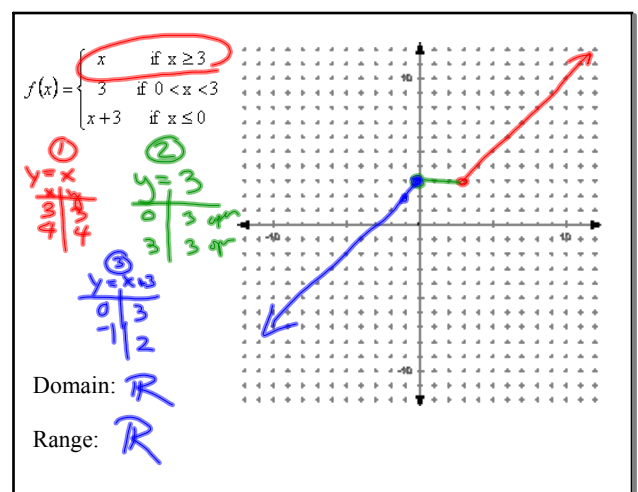
Oct 9-10:48 AM

Add/Subtr.  
on inside affects  
y-int

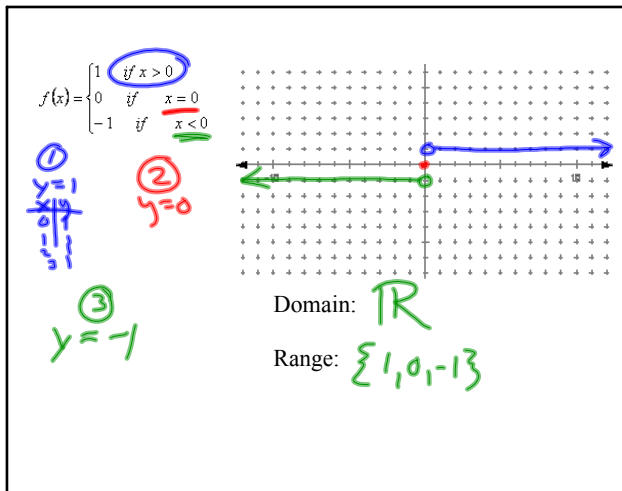
Oct 4-12:10 PM



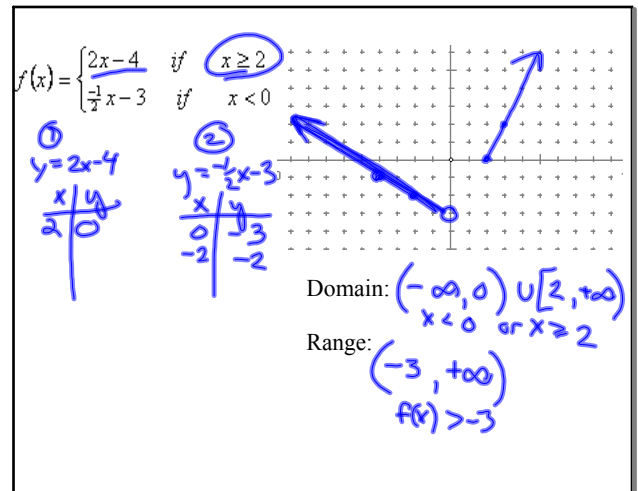
Oct 9-10:53 AM



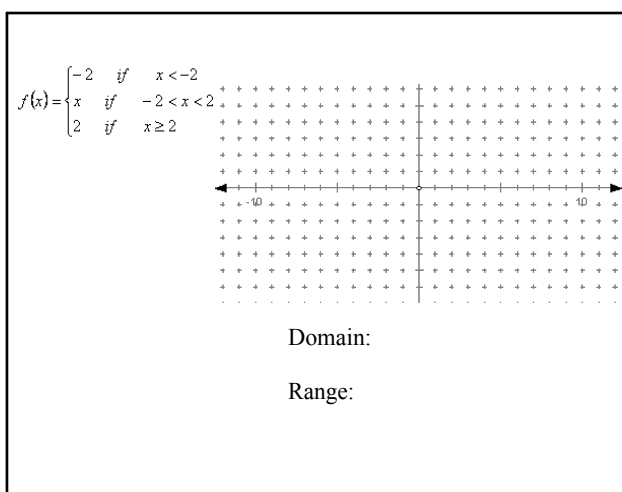
Oct 9-10:56 AM



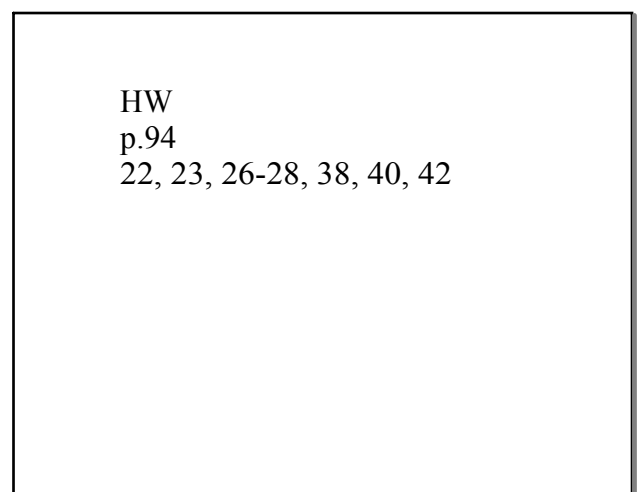
Oct 9-10:58 AM



Oct 9-10:59 AM



Oct 9-10:59 AM



Oct 9-11:03 AM